

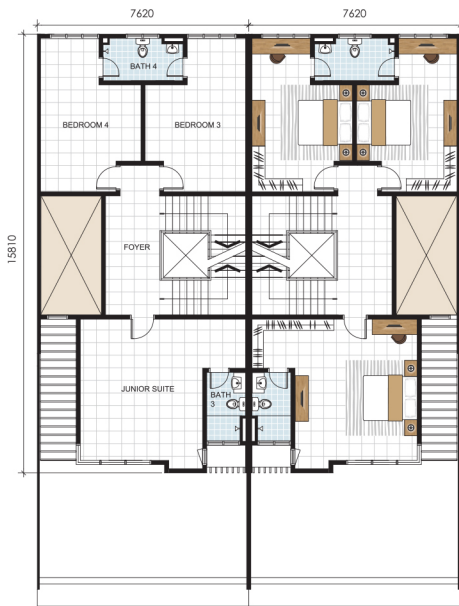


AUTUMN BREEZE SERIES

3 STOREY SUPERLINK XL HOMES

TYPE K

Land Area: 25' x 80' | Built-up Area : 3,931 sq.ft.
(Standard Intermediate Unit)



FIRST FLOOR PLAN



SECOND FLOOR PLAN



GROUND FLOOR PLAN

SPECIFICATIONS | TYPE K

Structure	: Reinforced concrete
Walls	: Clay brick
Roof	: Metal deck roof/ Reinforced concrete
Roof Structure	: Steel roof truss/ Reinforced concrete

Ceiling	
Ground floor	: Skim coat/ Emulsion paint/ Plasterboard ceiling
First floor	: Skim coat/ Emulsion paint/ Plasterboard ceiling
Second floor	: Skim coat/ Emulsion paint/ Plasterboard ceiling
Car porch	: Skim coat

Floor Finishes	
Car porch & Driveway	: Porcelain tiles
Entrance area	: Porcelain tiles
All bedrooms/ Guest room	: Porcelain tiles
Wet kitchen & Maid's room	: Porcelain tiles
Living, dining & Dry kitchen,	: Porcelain tiles
Family area/ Foyer (1st floor)	: Porcelain tiles
Staircase	: Porcelain tiles
Master bathroom (2nd floor)	: Porcelain tiles
Bathroom 2, 3, 4, 5 & 6	: Ceramic tiles
Balcony	: Ceramic tiles

Wall Finishes	
Dry & Wet kitchen (Selected wall only)	: Ceramic tiles to 5ft height
Master bathroom (2nd floor)	: Porcelain tiles to ceiling level
Bathroom 2, 3, 4, 5 & 6	: Ceramic tiles to ceiling level

Doors	
Main entrance door	: Decorative timber door on metal frame
All bedroom doors/ Guest room	: Timber flush doors on metal frames
All bathroom doors	: Timber flush doors on metal frames
Balconies	: Aluminum frame sliding doors
Maid's room	: Timber flush door on metal frame
Dry kitchen	: Timber flush doors on metal frames
Wet kitchen	: M. S. grille door

Windows	
All windows	: Aluminum frame windows

Sanitary Fittings			
Pedestals W.C	: 6	Toilet roll holders	: 6
Wash basins	: 7	Shower heads	: 6
Bib taps	: 8	Long bath	: 1
Kitchen sinks	: 2		

Electrical Fittings & Electrical Supply			
Lighting points	: 42	Door bell points	: 1
Ceiling fan points	: 9	Gate pillar lighting points	: 2
Gate pillar lighting points	: 2	Data points	: 3
13A (Single) power points	: 3	Air-con power points	: 9
13A (Twin) power points	: 17	CCTV point	: 3
Telephone points	: 3	Auto gate point come with	
TV points	: 4	polythene pipe with junction box	: 1
Water heater power points	: 6		

Locks	: Selected quality lock set
Fencing	: Brick fencing
Anti-Termite Treatment	: Anti-termite treated



COUNTRY VIEW RESOURCES SDN. BHD. (523855-A)
 A wholly owned subsidiary of COUNTRY VIEW BERHAD
 Unit 26-01, Mail Box 261, Level 26, Menara Landmark,
 No. 12, Jalan Ngee Heng, 80000 Johor Bahru, Johor.
 Tel : +607-223 6799
 Fax : +607-224 6557
 Website : www.countryview.com.my



07-509 0888